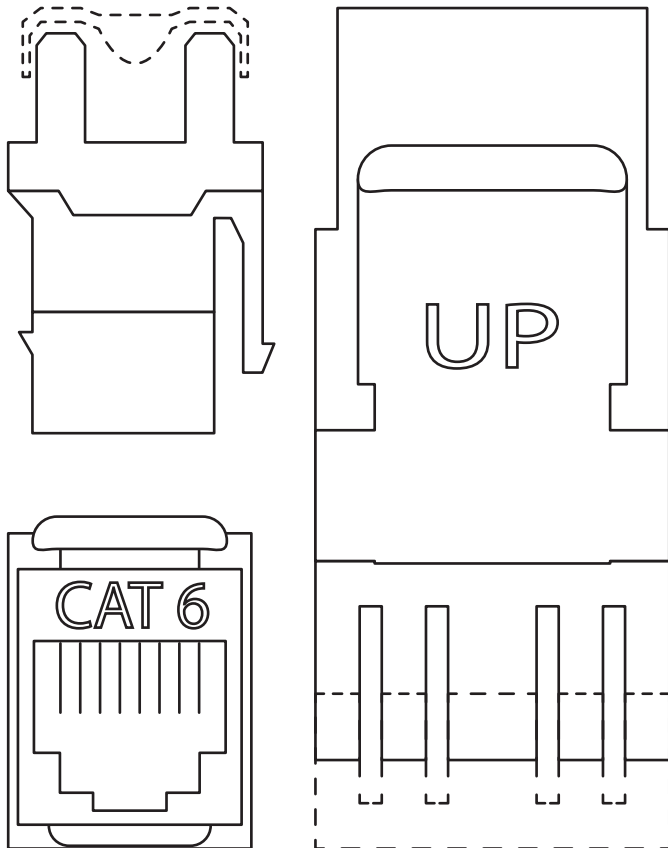


Category 6 Unshielded Keystone Jack

Summary



This is our highest-performance, Category 6, Unshielded Keystone Jack. This jack can be punched-down with either a 110 or Krone type tool allowing for quick and easy terminations. The connector is set up in a 180° configuration so that the punch field is in the back, allowing for rear termination.

Standards & Applications

North America:

- ANSI/TIA/EIA-568-A&B Category 6
- ANSI/TIA/EIA-TSB-40

International:

- ISO/IEC 11801-2nd Ed. Category 6
- CENELEC Generic Cabling Standard EN50173

Applications:

- IEEE 802.3 - 1000BASE-T - 1 Gb/s
- TIA/EIA-854 - 1000BASE-TX - 1 Gb/s
- ATM - 155 Mb/s - 155 Mb/s
- IEEE 802.3 - 100BASE-TX - 100 Mb/s
- CDDI - 100 Mb/s - 100 Mb/s
- IEEE 802.3 - 10BASE-T - 10Mb/s
- IP Broadband Video
- Voice over IP (VoIP)
- Power over Ethernet (PoE)

Specifications

Angle:

- 180 Degree

Termination:

- 110 Type or Krone Type

Materials:

- Housing: PC UL94V-0
- IDC: PC UL94V-0, Accepts 22-26 AWG Solid Wire
- PCB: FR4 1.6mm Thickness, 2 Layers
- Contact: PC UL94V-0, 0.45mm Diameter - Phosphor Bronze with 3U" to 50U" Gold Plating on Contact Area

Electrical: According to UL 1863

- Current Rating: 1.5 Amp Max
- Voltage Rating: 150 Volts
- Contact Resistance: 20 mΩ
- Insulation Resistance: 500 MΩ
- Dielectric Withstand Voltage: 1000 VAC RMS, 60Hz 1min



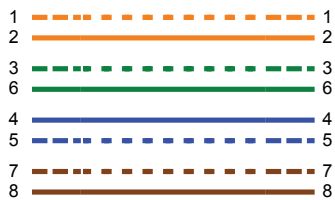
Category 6 Unshielded Keystone Jack

Test Results

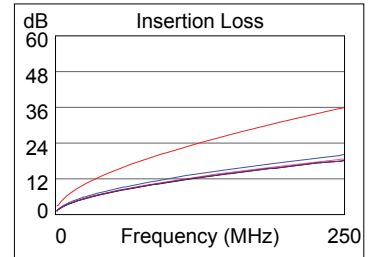
Category 6 Unshielded Keystone Jack - Headroom: 4.0 dB (NEXT 36-45)

PASS

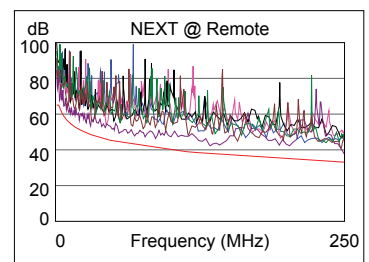
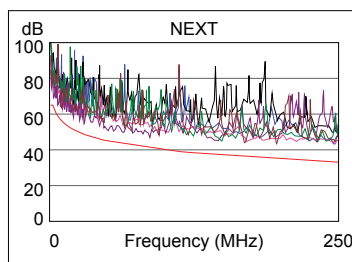
NVP: 69.0%



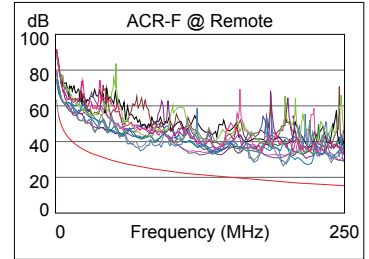
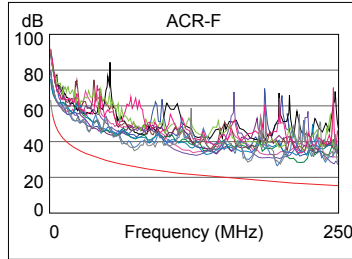
Length (ft), Limit 328	[Pair 78]	191
Prop. Delay (ns), Limit 555		300
Delay Skew (ns), Limit 50		18
Resistance (ohms)	[Pair 12]	9.6
Insertion Loss Margin (dB)	[Pair 12]	15.8
Frequency (MHz)	[Pair 12]	250.0
Limit (dB)	[Pair 12]	35.9



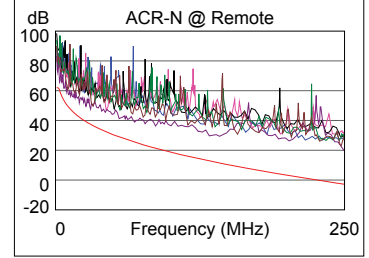
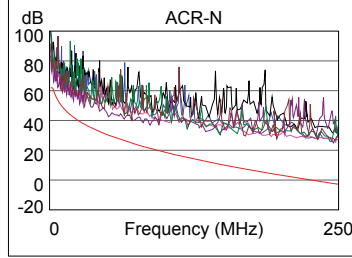
PASS	Worst Case Margin		Worst Case Value	
	MAIN	SR	MAIN	SR
Worst Pair	36-45	36-45	36-78	36-45
NEXT (dB)	4.2	4.0	9.8	4.9
Freq. (MHz)	3.6	3.6	243.0	249.5
Limit (dB)	63.7	63.7	33.3	33.1
Worst Pair	45	45	12	36
PS NEXT (dB)	5.9	5.7	10.0	6.5
Freq. (MHz)	3.5	11.4	245.5	250.0
Limit (dB)	61.5	53.1	30.3	30.2



PASS	MAIN		SR	
	MAIN	SR	MAIN	SR
Worst Pair	78-45	45-78	45-78	78-45
ACR-F (dB)	8.9	8.8	9.1	9.0
Freq. (MHz)	73.0	73.0	197.0	197.0
Limit (dB)	26.0	26.0	17.4	17.4
Worst Pair	45	45	45	45
PS ACR-F (dB)	11.0	10.6	13.8	10.6
Freq. (MHz)	73.0	197.0	249.5	197.0
Limit (dB)	23.0	14.4	12.3	14.4



N/A	MAIN		SR	
	MAIN	SR	MAIN	SR
Worst Pair	36-45	36-45	12-36	36-45
ACR-N (dB)	6.0	5.8	27.2	22.7
Freq. (MHz)	3.6	3.6	245.5	249.5
Limit (dB)	59.9	59.9	-2.3	-2.8
Worst Pair	36	36	12	36
PS ACR-N (dB)	7.7	7.7	25.8	23.9
Freq. (MHz)	3.6	3.6	245.5	250.0
Limit (dB)	57.4	57.4	-5.3	-5.8



PASS	MAIN		SR	
	MAIN	SR	MAIN	SR
Worst Pair	12	45	45	45
RL (dB)	6.1	4.7	8.4	4.7
Freq. (MHz)	34.8	207.5	228.0	207.5
Limit (dB)	16.3	8.8	8.4	8.8

